



GAT MONTHLY MEMBERSHIP PROGRESS REPORT

Results as of: 7/31/2023

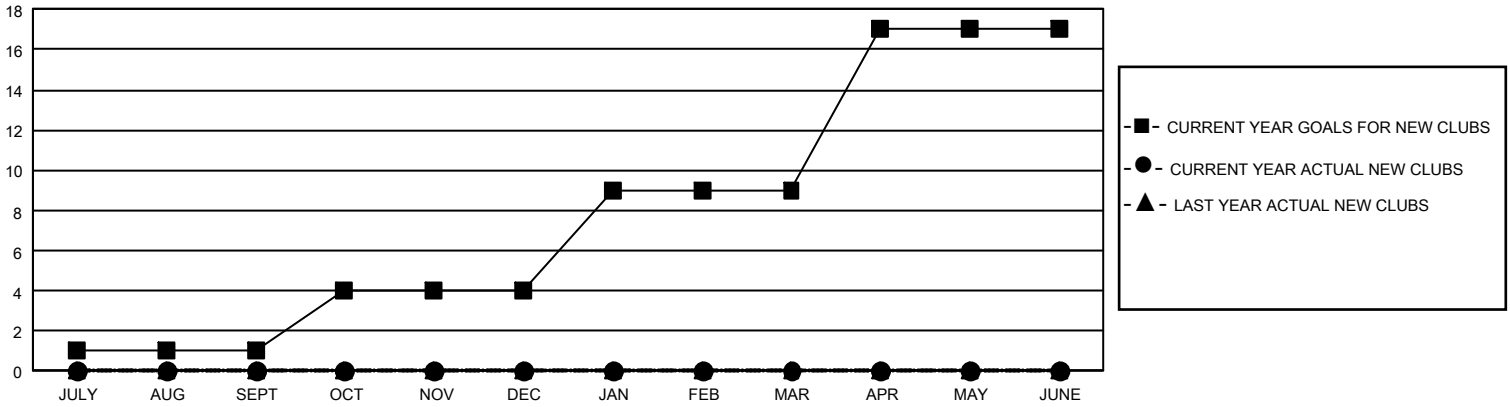
GMT Constitutional Area 4, Group B

REPORT DOES NOT INCLUDE CLUBS IN UNDISTRICTED AREAS.

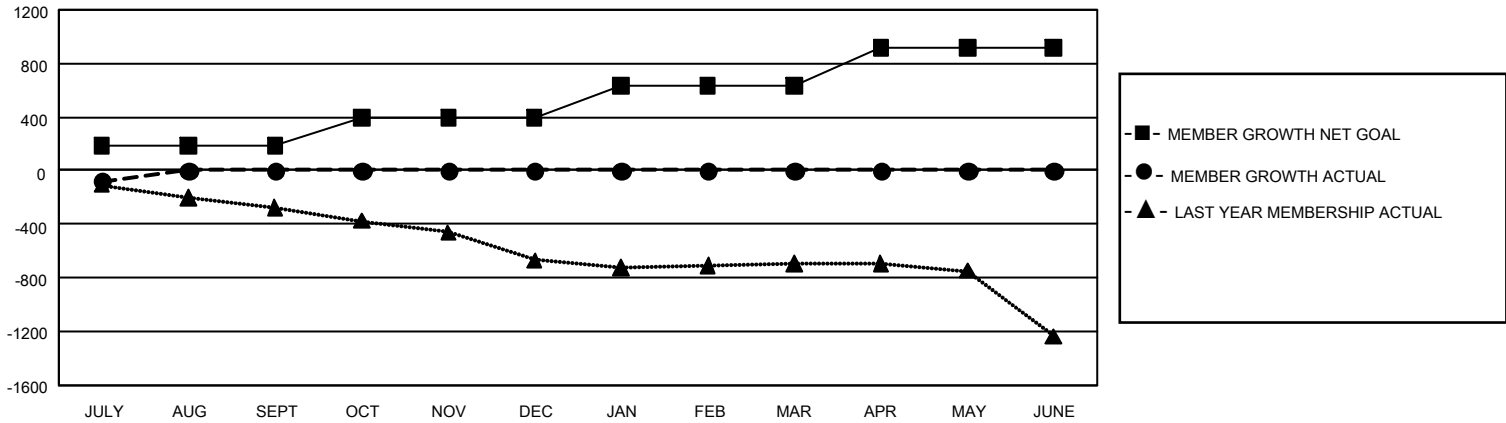
Clubs			
RESULTS FOR 2023-2024			
QUARTER	NEW CLUB GOAL	NEW CLUBS	DROPPED CLUBS
JULY/AUG/SEPT	3	0	5
OCT/NOV/DEC	9	0	0
JAN/FEB/MAR	15	0	0
APR/MAY/JUNE	24	0	0

Members			
RESULTS FOR 2023-2024			
QUARTER	MEMBER GROWTH NET GOAL	MEMBER GROWTH ACTUAL	DROPPED MEMBERS ACTUAL (including transfers)
JULY/AUG/SEPT	186	64	124
OCT/NOV/DEC	207	0	0
JAN/FEB/MAR	238	0	0
APR/MAY/JUNE	284	0	0

GOALS AND ACTUAL NEW CLUBS CUMULATIVE



GOALS AND ACTUAL MEMBERS CUMULATIVE



DROPPED CLUBS: 5	27 CLUBS OF 929 ADDED 1 OR MORE NEW MEMBERS	GENDER DISTRIBUTION	
		MALE 15,433 (78.18%) FEMALE 4,308 (21.82%) NON BINARY 0 (0.00%) PREFER NOT TO ANSWER 0 (0.00%)	
DROPPED MEMBERS		CLICK HERE FOR CUMULATIVE MEMBERSHIP DATA	TOTAL FAMILY UNIT MEMBERS 894
DECEASED 13 CLUB CANCELLED 0 OTHER 111 TOTAL 124			FAMILY MEMBERS PAYING HALF DUES 441